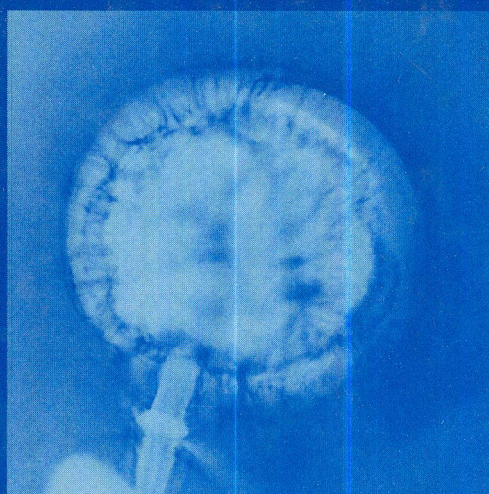
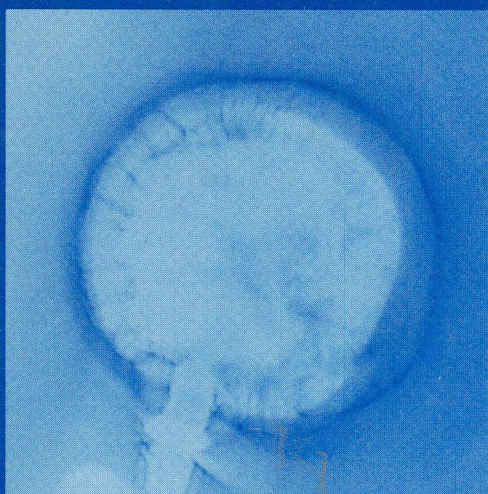


*Advanced Diagnostics*  
FOR MAGNETIC AND  
INERTIAL FUSION



Edited by

PETER E. STOTT, ALAN WOOTTON,  
GIUSEPPE GORINI, ELIO SINDONI,  
AND DIMITRI BATANI

62L.482  
A244

# Advanced Diagnostics for Magnetic and Inertial Fusion

Edited by

**Peter E. Stott**

*International School of Plasma Physics "P. Caldirola"  
Milan, Italy*

**Alan Wootton**

*Lawrence Livermore National Laboratory  
Livermore, USA*

and

**Giuseppe Gorini**

**Elio Sindoni**

**Dimitri Batani**

*University of Milan-Bicocca  
Milan, Italy*

THƯ VIỆN TRƯỜNG ĐHSPT

SKN 4758

**Kluwer Academic / Plenum Publishers**  
New York, Boston, Dordrecht, London, Moscow

# CONTENTS

## FUSION EXPERIMENTS AND RELATED DIAGNOSTIC NEEDS

<b>1. REQUIREMENTS AND ISSUES IN DIAGNOSTICS FOR NEXT STEP BURNING PLASMA EXPERIMENTS</b>	<b>1</b>
A.E. Costley	
Introduction	1
Requirements for plasma and first wall measurements on a BPX	2
Environment of a BPX: key radiation effects	4
The ITER diagnostic system: the most developed example of BPX diagnostics	6
Key outstanding issues	7
Implementation on different BPX contenders	8
Summary	9
<b>2. INTRODUCTION TO DIAGNOSTICS REQUIREMENTS FOR ICF</b>	<b>11</b>
D. Juraszek	
Introduction	11
ICF critical milestones	11
Experimental strategy	14
Diagnostics requirements	14
Conclusions	17
<b>3. CORE PERFORMANCE AND MIX IN DIRECT-DRIVE SPHERICAL IMPLOSIONS ON OMEGA</b>	<b>19</b>
C. Stoeckl, J.A. Delettrez, <sup>a</sup> R. Epstein, <sup>a</sup> V.Yu. Glebov, <sup>a</sup> R.L. Keck, R.L. McCrory, P.W. McKenty, F.J. Marshall, D.D. Meyerhofer, P.B. Radha, S.P. Regan, S. Roberts, W. Seka, S. Skupsky, V.A. Smalyuk, C. Sorce, J.M. Soures, R.P.J. Town, B. Yaakobi, J.A. Frenje, C.K. Li, R.D. Petrasso, F.H. Seguin, K. Fletcher, S. Padalino, C. Freeman, N. Izumi, R. Lerche, T.W. Phillips, and T.C. Sangster	
Introduction	20
Diagnostics	20
Laser condition	22
Experimental results	22
Mix measurements	24
Summary	24
<b>4. LASER-PLASMA INTERACTION DIAGNOSTICS FOR ICF FUSION RESEARCH</b>	<b>27</b>
W. Seka, R.S. Craxton, R.L. Keck, J.P. Knauer, D.D. Meyerhofer, S.P. Regan, C. Stoeckl, B. Yaakobi, R.E. Bahr, D. Montgomery, H. Baldis, and R. Kirkwood	
Introduction	27

	Plasma diagnostics and results	28
	Conclusion	30
<b>5.</b>	<b>REQUIREMENTS FOR DIAGNOSTIC IN CONTROLLING ADVANCED TOKAMAK MODES</b>	<b>31</b>
	Y. Kusama	
	Introduction	31
	Role and issues of plasma controls towards advanced TOKAMAK modes	32
	Key diagnostics and requirements for control diagnostics	33
	Plasma control towards advanced TOKAMAK modes in JT-60U	34
	Issues in developing diagnostics and feedback control schemes for controlling advanced TOKAMAK modes	37
	Summary	37
<b>6.</b>	<b>DIAGNOSTIC NEEDS FOR DIVERTOR AND EDGE PHYSICS</b>	<b>39</b>
	A.W. Leonard	
	Introduction	39
	Parallel transport	40
	Perpendicular transport	43
	2D profiles	44
	Special issues	45
	Conclusions	46
<b>7.</b>	<b>ITER MAGNETICS: KEY DESIGN ISSUES</b>	<b>47</b>
	G. Vayakis and the ITER International Team and Home Teams	
	Introduction	47
	Key design issues	47
	Outstanding issues	49
<b>8.</b>	<b>DIAGNOSTICS FOR ENERGETIC CHARGED PARTICLES RELATED TO FAST IGNITOR EXPERIMENTS</b>	<b>51</b>
	Y. Kitagawa, K. Mima, K. Tanaka, R. Kodama, Y. Sentoku, and T. Yamanaka	
	Introduction	51
	100 TW PWM Laser illumination on imploded CD shell and neutron enhancements	51
	Proton rear emission and magnetic field generation from GMII laser illuminated plastic foils	53
	Petawatt laser construction	57
	Conclusion	58
<b>9.</b>	<b>ALPHA-PARTICLE MEASUREMENTS NEEDED FOR BURNING PLASMA EXPERIMENTS</b>	<b>59</b>
	K.M. Young	
	Introduction	59
	Measurements of confinement and slowing down: effect of plasma heating and profiles	60
	Impact on plasma stability: macrostability and collective effects	62
	Impact of instabilities on the alpha-particle behaviour: redistribution and loss	63
	Measurement for studies of transport of fast ions and $\alpha$ -ash removal	64
	Summary and recommendations for measurements for $\alpha$ -physics in a BP device	64
<b>10.</b>	<b>DIAGNOSTICS BASED ON HELIUM NEUTRAL BEAMS IN ITER</b>	<b>67</b>
	M.G. O'Mullane, H. Anderson, Y. Andrew, M. Brix, C. Giroud, A.G. Meigs, M. Proschek, H.P. Summers, K-D. Zastrow, and contributors to the EFDA-JET Work Programme	
	Introduction	67
	JET experiments and implications for ITER	67
	Conclusions	70

<b>11. ADVANCED CONCEPT IN FAST IGNITION AND THE RELEVANT DIAGNOSTICS</b>	71
H. Habara, K. Lancaster, C.J. Reason, C. Aldis, B. Lester, T. Craig Sangster, and P.A. Norreys	
Introduction	71
Novel geometry of fast ignition scheme	72
Neutron spectroscopy in ultra-intense laser-matter interactions	75
<b>12. RECENT EXPERIENCE AND FUTURE PLANS FOR JET DIAGNOSTICS</b>	79
J. Sanchez and contributors to the EFDA-JET work programme	
Introduction	79
Operation of JET diagnostics during 2000-01	79
The JET EP project	81
<b>13. STRATEGY OF THE TORE SUPRA DIAGNOSTIC SET FOR STEADY-STATE HIGH POWER OPERATION</b>	87
C. Laviron	
Introduction	87
Constraints	88
TORE SUPRA diagnostics	88
Conclusion	90

## NEUTRON AND PARTICLE DIAGNOSTICS

<b>14. IMAGING OF PLASMAS USING PROTON BEAMS GENERATED BY ULTRA-INTENSE LASER PULSES</b>	91
M. Borghesi, D.H. Campbell, R.J. Clarke, M. Galimberti, L.A. Gizzi, M. Haines, A.J. MacKinnon, A. Schiavi, and O. Willi	
Introduction	91
Experimental set-up and diagnostic arrangement	92
Imaging of thin charged objects	94
Imaging of laser-produced plasmas	95
Imaging of ultra-intense interactions	96
Conclusion	98
<b>15. NUCLEAR DIAGNOSTICS OF ICF</b>	99
N. Izumi, R.A. Lerche, M.J. Moran, T.W. Phillips, T.C. Sangster, G.J. Schmid, M.A. Stoyer, L. Disdier, J.L. Bourgade, A. Rouyer, R.K. Fisher, R.R. Berggren, S.E. Caldwell, J.R. Faulkner, J.M. Mack, J.A. Oertel, C.S. Young, V. Yu. Glebov, P.A. Jaanimagi, D.D. Meyerhofer, J.M. Soares, C. Stoeckl, J.A. Frenje, C.K. Li, and R.D. Petrasso	
Introduction	99
Basic nuclear reactions in ICF plasmas	100
Core diagnostics	102
Advanced nuclear diagnostics	103
<b>16. NEUTRON EMISSION SPECTROSCOPY FOR MAGNETIC CONFINEMENT EXPERIMENTS</b>	107
J. Källne	
Introduction	107
Fusion neutron spectrometry since the 50's	109
Instruments tested at JET	110
Gross features of the neutron flux spectrum	111
Thermal and driven reaction contributions to PF	111
Analysis of NES data and interpretation	112
Plasma response to $P_{\Omega}$ , $P_{RF}$ and $P_{NB}$	113

From line integrated data to local information	114
Fuel density measurements	115
Conclusions	115
<b>17. PROJECTED NEUTRON EMISSION SPECTROSCOPY DIAGNOSIS OF JET DEUTERIUM PLASMAS</b>	<b>117</b>
G. Gorini, S. Conroy, G. Ericsson, L. Giacomelli, H. Henriksson, A. Hjalmarsson, J. Källne, and M. Tardocchi	
<b>18. PROPOSED MAGNETIC PROTON NEUTRON SPECTROMETER UPGRADE (MPRu)</b>	<b>121</b>
G. Ericsson, S. Conroy, G. Gorini, H. Henriksson, A. Hjalmarsson, J. Källne, and M. Tardocchi	
<b>19. THE 2.5-MeV NEUTRON TIME OF FLIGHT SPECTROMETER FOR OPTIMIZED COUNT RATE (TOFOR)</b>	<b>125</b>
A. Hjalmarsson, S. Conroy, G. Ericsson, L. Giacomelli, G. Gorini, H. Henriksson, J. Källne, and M. Tardocchi	
Introduction	125
Principle of TOFOR	126
Neutron transport calculations	126
Results and discussion	127
Conclusions	128
<b>20. MEASUREMENT OF HIGH ENERGY PROTON TEMPERATURE IN LHD</b>	<b>129</b>
M. Sasao, A.V. Krasilnikov, M. Isobe, T. Seki, K. Saito, T. Saida, S. Murakami and the LHD-Experimental Group	
Introduction	129
Neutral flux and spectrum of high energy atoms	130
Neutral influx calculations	130
Experimental results	132
<b>21. ESCAPING ENERGETIC ION MEASUREMENT ON LARGE SCALE MAGNETIC FUSION DEVICES</b>	<b>133</b>
T. Saida, M. Sasao, M. Isobe, D.S. Darrow, T. Nishitani, and A. Ebisawa	
Introduction	133
Local measurement of lost ion	133
Spatial distribution measurement of escaping ion	135
Summary	136
<b>22. FAST ION LOSS DIAGNOSTIC FOR THE W7-X STELLARATOR</b>	<b>137</b>
A. Werner, D.S. Darrow, R. Kuduk, H.J. Hartfuss, and A. Weller	
Introduction	137
Detector concepts	138
Finding suitable detector positions	139
Probe design	140
<b>23. GAMMA-RAYS: MEASUREMENTS AND ANALYSIS AT JET</b>	<b>141</b>
V.G. Kiptily, O.N. Jarvis, L. Bertalot, S.W. Conroy, S. Popovichev, M.J. Mantsinen, and contributors to the EFDA-JET Work Programme	
Introduction	141
Experiments and results	142
Conclusions	144
<b>24. SPATIAL DISTRIBUTION MEASUREMENT OF HIGH ENERGY PARTICLES USING TIME-OF-FLIGHT NEUTRAL PARTICLE ENERGY ANALYZER IN LARGE HELICAL DEVICE</b>	<b>145</b>
T. Ozaki, P. Goncharov, S. Murakami, S. Sudo, M. Shoji, M. Emoto, H. Funaba, M. Goto, K. Ida, K. Ikeda, O. Kanko, K. Kawahata, T. Kobuchi, S. Kubo, R. Kumazawa, S. Morita, O. Motojima,	

S. Muto, T. Mutoh, Y. Nagayama, Y. Nakamura, H. Nakanishi, K. Narihara, N. Noda, S. Ohdachi, N. Ohyaabu, Y. Oka, M. Osakabe, B. Peterson, K. Saito, S. Sakakibara, M. Sasao, K. Sato, T. Seki, T. Shimozuma, Y. Takeiri, K. Tanaka, H. Torii, K. Tsumori, T. Watanabe, T. Watari, V. Zanza, G. Bracco, A. Sibio, B. Tilia, and G1/G2 Group	
Introduction	145
The neutral particle measurement system	146
Results in NBI long discharge	146
Results in ICH plasma	147
Results in ICH long discharge	148
Conclusion	148
<b>25. A NEW DIAGNOSTIC TO ACHIEVE NEUTRON SPECTROSCOPY IN A HIGH GAMMA BACKGROUND IN ICF EXPERIMENTS</b>	149
M. Houry, L. Disdier, and A. Fedotoff	
Introduction	149
Secondary and tertiary neutron spectroscopy as a measure of $\langle \rho R \rangle_{\text{FUEL}}$	149
Gamma background induced by neutrons	150
Experimental set-up: the DEMIN spectrometer	151
Conclusion	152
<b>26. NATURAL DIAMOND DETECTOR BASED SPECTROMETERS FOR MAGNETIC AND INERTIAL CONFINEMENT FUSION</b>	153
A.V. Krasilnikov, A.G. Alekseyev, V.N. Amosov, Y.A. Kaschuck, and I.N. Rastyagaev	
NDD based DT neutron spectrometry and flux monitor system for ITER-FEAT	153
Perspectives on the NDD based charge exchange atom spectrometers for fast confined ion studies in ITER-FEAT	155
Possibilities of the NDD application in ICF experiments	155
<b>27. LASER FUSION FUEL ION TEMPERATURE DIAGNOSTICS</b>	157
J. Chen, Z. Zheng, H. Peng, B. Zhang, Y. Ding, and C. Tang	
Introduction	157
Experimental conditions	158
Experimental results	158
<b>OPTICAL AND X-RAY DIAGNOSTICS</b>	
<b>28. X-RAY IMAGING SYSTEM WITH CONTINUOUS TIME RESOLUTION</b>	161
Y. Aglitskiy, M. Karasik, V. Serlin, S. Obenschain, and C. Pawley	
Introduction	161
Characteristics of the experiment set-up	163
Experimental results	165
Conclusions	167
<b>29. RAYLEIGH TAYLOR AND LASER IMPRINTING DIAGNOSTICS</b>	169
H. Azechi, M. Nakai, K. Shijemori, N. Izumi, H. Shiraga, M. Nishikino, T. Sakaiya, S. Fujioka, Y. Tamari, N. Miyanaaga, and H. Nishimura	
Introduction	169
Moiré interferometry of short wavelength Rayleigh-Taylor instability	170
Penumbral imaging for density measurement	173
Fresnel phase zone plate for density measurement	174
Conclusion	175

<b>30. PLASMA DIAGNOSTICS IN INTERACTION OF POWERFUL LASER PULSES WITH INHOMOGENEOUS LOW DENSITY MEDIA</b>	177
A.E. Bugrov, I.N. Burdonskiy, V.V. Gavrilov, A.Yu. Goltsov, I.K. Fasahkov, V.N. Kondrashov, S.N. Koptyaev, N.G. Kovalskiy, M.I. Pergament, V.M. Petryakov, G.M. Yankovskiy, and E.V. Zhuzhukalo	
Introduction	177
Experimental conditions	177
Experimental results and discussion	178
Conclusion	180
<b>31. LASER AND X-RAY IRRADIATION DIAGNOSTICS THAT HAVE PAVED THE PATH TO SIGNIFICANTLY IMPROVED ICF TARGET PERFORMANCE</b>	181
R.L. Keck, W.R. Donaldson, V.Yu. Glebov, P.A. Jaanimagi, F.J. Marshall, P.W. McKenty, D.D. Meyerhofer, S.P. Regan, W. Seka, C. Stoeckl, and R. Boni	
Introduction	181
Irradiation-uniformity requirements	181
Calorimeters	182
Harmonic energy diagnostic	182
Transport	183
P510 Streak cameras	184
Prepulse monitors	185
UVETP measurement	186
X-Ray pinhole charge-injection-device imager	186
Results	187
Conclusion	188
<b>32. ABSORPTION AND FLUORESCENCE SPECTROSCOPY AS A DIAGNOSTIC OF LASER DRIVEN EXPERIMENTS</b>	189
D.J. Hoarty, C.C. Smith, O. Willi, G. Magelssen, R. Chrien, S. Caldwell, M. Wood, and R. Watt	
Introduction	189
Experiments diagnosed by point projection absorption spectroscopy	190
Modelling of the absorption data	192
Experiments diagnosed by fluorescence spectroscopy	193
Modelling of the fluorescence spectra	194
Summary/Conclusion	196
<b>33. MEASUREMENTS OF THE POLOIDAL MAGNETIC AND RADIAL ELECTRIC FIELD PROFILES IN ASDEX UPGRADE AND JET</b>	197
J. Hobirk, N.C. Hawkes, P.J. McCarthy, D. Merkl, R.C. Wolf, ASDEX Upgrade Team and contributors to the EFDA-JET Work Programme	
Introduction	197
Principle of the measurement	198
Diagnostic set-up	198
Experimental results	199
Influence of another beam source on measurement	201
First results of radial electric field measurements	202
Summary	203
<b>34. RECENT PROGRESS IN BEAM EMISSION AND CX SPECTROSCOPY</b>	205
M.G. von Hellermann, R. Jaspers, H.P. Summers, and K-D. Zastrow	
Introduction	205
Combination of CXRS and BES	206
Hybrid effective emission rates for low-Z CX spectra	206
Cross-section effects in the presence of $n = 2$ populations	207
Energy scans at TEXTOR-94	207
Future work and applications	208



<b>35. LINE RATIO METHOD FOR POLOIDAL MAGNETIC FIELD MEASUREMENT USING Li-MULTIPLY (2<sup>2</sup>S - 2<sup>2</sup>P) EMISSION</b>	209
A. Korotkov, K. McCormick, P. Morgan, J. Schweinzer, J. Vince, and Contributors to the EFDA-JET Work Programme	
Introduction	209
Principle of the measurement	210
Preliminary experiments on JET	211
Conclusions	212
<b>36. X-RAY EMISSION FROM LASER IRRADIATED CLUSTERS</b>	213
T. Desai	
<b>37. DETERMINATION OF THE ELECTRON DENSITY AND ION COMPOSITION HISTORIES IN A NONEQUILIBRIUM PLASMA USING SELF-CONSISTENT COLLISIONAL-RADIATIVE CALCULATIONS</b>	217
V. Bernshtam, L. Gregorian, and Y. Maron	
<b>38. USE OF 1D D<sub>α</sub> CAMERA TO MEASURE EDGE NEUTRAL AND ELECTRON DENSITY EVOLUTIONS</b>	221
M.R. Tournianski, P.G. Carolan, G.F. Counsell, and M.G. O'Mullane	
Introduction	221
Instrumentation	221
Method and experimental results	222
Discussion	224
<b>39. X-RAY FIELD ASYMMETRY EFFECT ON THE TIME OF NEUTRON GENERATION IN EXPERIMENTS WITH INDIRECT DRIVE TARGETS</b>	225
S.A. Bel'kov, A.V. Bessarab, G.G. Kochemasov, and S.P. Martynenko	
Introduction	225
The results of measurements of time moment of neutron yield	225
<b>40. X-RAY MULTI CAMERA TOMOGRAPHY SYSTEM OF WENDELSTEIN 7-X</b>	229
S. Klose, A. Weller, P. Schötz, A. Werner, and H. Greve	
Introduction	229
Physical background of the x-ray emission	229
Geometrical layout of XMCTS	229
Camera design	231
Vessel integration	232
<b>41. THE ATOMIC K- AND L-SHELL IONIZATION CROSS-SECTIONS BY ELECTRON IMPACT</b>	233
C. Tang, Z. Luo, Z. An, F. He, X. Peng, and X. Long	
Introduction	233
Experiment	234
Results	234
<b>42. INNOVATIVE NEUTRAL BEAM BASED DIAGNOSTICS ON THE MST REVERSED-FIELD PINCH</b>	237
D.J. Den Hartog, D. Craig, G. Fiksel, J.C. Reardon, V.I. Davydenko, and A.A. Ivanov	
Introduction and summary	237
Charge-exchange recombination spectroscopy	238
Motional Stark effect	238
Rutherford scattering	239

<b>43. A VACUUM X-RAY CRYSTAL SPECTROMETER FOR THE HANBIT MAGNETIC MIRROR DEVICE</b>	241
S.G. Lee, J.G. Bak, and M. Bitter	
Introduction	241
Hanbit x-ray crystal spectrometer	242
Calibration measurements	242
Conclusions	244
<b>44. X-RAY SPECTROSCOPY AND CALIBRATIONS IN THE 50 eV to 60 keV RANGE</b>	245
J. Seely, U. Feldman, J. Weaver, and, L. Hudson	
Introduction	245
Hard x-ray spectrometers (HXS) for LLE	245
High energy electronic x-ray spectrometer (HENEX) for NIF	247
Soft x-ray power diagnostic (SXP)	248
<b>45. INTEGRATED SPECTROSCOPIC EDGE DIAGNOSTICS ON COMPASS-D</b>	249
N.J. Conway, P.G. Carolan, A.R. Field, H. Meyer, and M.J. Walsh	
Introduction	249
Diagnostic description	249
Analysis description	250
Physics studies	251
Conclusions and future work	252
<b>46. CONCEPTUAL DESIGN OF THE CXRS SYSTEM FOR ITER-FEAT</b>	253
S. Tugarinov, M. von Hellermann, I. Beigmann, V. Dokouka, R. Khayrutdinov, A. Krasilnikov, A. Malaquias, I. Tolstikhina, and L. Vainshtein	
Introduction	253
Emission modelling and beam attenuation	254
Results and conclusions	256
<b>47. X-RAY BACKLIGHTING OF CURRENT - DRIVEN MULTI WIRE ARRAY ON ANGARA-5-1 FACILITY</b>	257
V.V. Alexandrov, E.V. Grabovsky, K.N. Mitrofanov, G.M. Oleinik, I.Ju. Porofeev, V.P. Smirnov, and G.S. Volkov	
Introduction	257
Experimental arrangement	257
Experimental results	259
Conclusion	260
<b>48. PRELIMINARY RESULTS OF CHARGE EXCHANGE <math>q</math> MEASUREMENTS IN T-10 TOKAMAK</b>	261
A.A. Medvedev, V.S. Strelkov	
Introduction	261
Physical basis of the technique	261
Results of preliminary experiments on T-10	262
Apparatus for multi-chord $q$ measurements in T-10	264
Conclusion	264
<b>49. THERMAL SOFT X-RAYS INTERACTION WITH FOAM LAYERED GOLD TARGETS</b>	265
D. Batani, T. Desai, Th. Löwer, T.A. Hall, W. Nazarov, M. Koenig, and A. Benuzzi-Mounaix	
<b>50. HIGH SPECTRAL RESOLUTION X-RAY IMAGING CRYSTAL SPECTROMETER FOR TOKAMAKS AND STELLARATORS</b>	269
G. Bertschinger, M. Bitter, and D. Rusbüldt	

Introduction	269
Requirements for high resolution x-ray spectroscopy	269
Bragg reflection on spherically bent crystals	270
Layout of an imaging spectrometer for TEXTOR and W7-X	273
Conclusions	276

## RADIATION EFFECTS AND OTHER EMERGING PROBLEMS

<b>51. TRITIUM ISSUES IN NEXT-STEP DEVICES</b>	<b>277</b>
C.H. Skinner and G. Federici	
Introduction	277
Tritium experience in contemporary TOKAMAKs	278
Tritium in ITER and FIRE	279
Tritium in IFE designs	281
Diagnostic needs for MFE Next-Step devices	281
Tritium removal by scanning laser	282
<b>52. DIAGNOSTIC FIRST MIRRORS FOR BURNING PLASMA EXPERIMENTS</b>	<b>285</b>
V.S. Voitsenya, A.F. Bardamid, A.I. Belyaeva, V.N. Bondarenko, A.E. Costley, A.A. Galuza, A.V. Gorshkov, N. Kishimoto, V.G. Konovalov, D.V. Orlinskij, A.V. Rogov, I.V. Ryzhkov, A.H. Shapoval, S.I. Solodovchenko, A.F. Shtan', K.Yu. Vukolov, and S.N. Zvonkov	
Introduction	285
Characterization of FMS	286
Experimental	286
Experimental results of sputtering tests	287
Contamination of the mirror surface	289
The prospect of Be as the FM material	291
Mirrors in divertor	291
Discussion	292
Conclusions	293
<b>53. RADIATION HARDNESS TEST OF MICA BOLOMETERS FOR ITER IN JMTR</b>	<b>295</b>
R. Reichle, T. Nishitani, E.R. Hodgson, L.C. Ingesson, E. Ishitsuka, S. Kasai, K.F. Mast, T. Shikama, J.C. Vallet, and S. Yamamoto	
Introduction	295
Experimental set-up	295
Experimental results	296
Discussion	297
Conclusions	298
<b>54. EXPERIMENTAL STUDY OF FIRST MIRROR DEGRADATION UNDER INFLUENCE OF ITER RELEVANT CONDITIONS</b>	<b>299</b>
K. Vukolov, A. Bardamid, A. Gorshkov, V. Konovalov, A. Rogov, V. Sannikov, S. Solodovchenko, V. Voitsenya, and S. Zvonkov	
Introduction	299
CXA sputtering	299
Contamination of mirror surface and laser cleaning	300
Laser damage	302
Conclusion	302

## INTERFEROMETRY, POLARIMETRY, THOMSON SCATTERING

<b>55. THOMSON SCATTERING IN INERTIAL CONFINEMENT FUSION RESEARCH</b>	<b>303</b>
S.H. Glenzer	

Introduction	303
Experimental set-up	304
Results and discussion	305
Conclusion	308
<b>56. FAST ION DYNAMICS MEASURED BY COLLECTIVE THOMSON SCATTERING</b>	<b>311</b>
H. Bindslev, L. Porte, J.A. Hoekzema, P. Voskov, and D. Van Eester	
Fast ions in fusion plasmas	311
Collective Thomson scattering	311
The TEXTOR CTS	313
<b>57. UTILIZATION OF LI-BEAM POLARIMETRY FOR EDGE CURRENT DETERMINATION ON DIII-D</b>	<b>319</b>
D.M. Thomas, D.K. Finkenthal, T.N. Carlstrom, D.H. Kellman, G. Brewis, T.H. Osborne, J.I. Robinson, A.S. Bozek, K.H. Burrell, M.A. Makowski, S.G.E. Pronko, and S. Delaware	
Introduction	319
Neutral lithium beam and polarization optics	320
Detection and polarization analysis	321
Initial results	321
Summary and future work	321
<b>58. ROBUST LINE DENSITY MEASUREMENTS AT W7-AS USING A COTTON MOUTON POLARIMETER</b>	<b>323</b>
T. Bindemann, Ch. Fuchs, H.J. Hartfuß, and M. Hirsch	
Introduction	323
Mathematical treatment of polarization changes	323
Ellipticity modulation	324
Experimental set-up	325
Recent experimental results	325
<b>59. DETERMINATION OF THE ELECTRON DENSITY AND MEAN ENERGY FOR ANISOTROPIC VELOCITY DISTRIBUTIONS BY THOMSON SCATTERING</b>	<b>327</b>
B. Kurzan, H. Murmann, D. Bolshukhin, M. Jakobi, and the ASDEX Upgrade Team	
Introduction	327
Diagnostics	327
Experimental results	328
Reconstructed velocity distribution function	329
Conclusion	330
<b>60. HIGH RESOLUTION THOMSON SCATTERING ON JET – AN ASSESSMENT OF THE FEASIBILITY</b>	<b>331</b>
C. Gowers, C.J. Barth, R. Behn, M. Beurskens, B. Kurzan, P. Nielsen, R. Pasqualotto, M. Peres Alonso, F. Orsitto, J. Sanchez, M. Walsh, D. Wilson and contributors to the EFDA-JET work programme	
Introduction	331
Stray laser light	333
Plasma light background	333
Collection window	334
Conclusion	334
<b>61. HIGH RESOLUTION THOMSON SCATTERING FOR JET</b>	<b>335</b>
R. Pasqualotto and P. Nielsen	
Introduction	335
Layout	335
Spectrometers	337
Acquisition system	337

Lasers	337
Performance simulation	338

## OTHER DIAGNOSTIC SYSTEMS

<b>62. RECENT PROGRESS IN MICROWAVE IMAGING DIAGNOSTICS</b>	339
N.C. Luhmann, C.C. Chang, B.H. Deng, G.W. Domier, C. Liang, X.P. Liang, H.J. Lu, J. Wang, Z.G. Xia, E. Mazzucato, T. Munsat, H. Park, A.J.H. Donné, M.J. van de Pol, A. Mase, K. Kawahata, Y. Nagayama, K. Mizuno, H. Matsuura, and A. Miura	
Introduction	339
Electron cyclotron emission imaging (ECEI)	340
Microwave imaging reflectometry (MIR)	342
Simultaneous ECEI-MIR	343
Imaging technology developments	344
<b>63. ELECTRON BERNSTEIN EMISSION DIAGNOSTIC OF ELECTRON TEMPERATURE PROFILES AT W7-AS STELLARATOR</b>	347
F. Volpe, H.P. Laqua and the W7-AS Team	
Introduction	347
Ray tracing code and antenna optimization	348
Experimental set-up	349
Profiles	350
Heat waves	351
Fast measurements	352
Conclusions	353
<b>64. TARGET DIAGNOSTIC SYSTEM FOR SANDIA NATIONAL LABORATORIES' Z FACILITY</b>	355
R.J. Leeper, J.R. Asay, J.E. Bailey, G.R. Bennett, A.L. Carlson, G.A. Chandler, G.W. Cooper, M. Cuneo, C. Deeney, G. Dunham, D.L. Fehl, D. Hanson, C.A. Hall, M.J. Hurst, D. Jobe, M. Knudson, P. Lake, S.E. Lazier, J.S. McGurn, R.C. Mock, T. Moore, T.J. Nash, D. Nielsen, R.E. Olson, J. Porter, J. Pyle, G.A. Rochau, L.E. Ruggles, C.L. Ruiz, T.W.L. Sanford, J.F. Seamen, J.J. Seamen, W.W. Simpson, R. Smelser, R.B. Spielman, W.A. Stygar, J.A. Torres, and D.F. Wenger	
Introduction	355
X-ray power and fluence diagnostics	357
X-ray imaging diagnostics	358
Spectroscopy diagnostics	360
Shock physics diagnostic techniques	360
Neutron diagnostics	361
Summary and conclusions	362
<b>65. DIAGNOSTICS FOR HELICAL SYSTEMS</b>	363
S. Sudo, H.J. Hartfuss, T. Mizuuchi, T. Ozaki, Y. Nagayama, T. Akiyama, A. Fujisawa, Y. Hamada, K. Ida, T. Ido, H. Iguchi, S. Kado, K. Kawahata, K. Kondo, K. Narihara, A. Nishizawa, H. Okada, B.J. Peterson, F. Sano, M. Sasao, K. Sato, M. Shoji, K. Tanaka, S. Tsuji-Iio, K. Watanabe, A. Weller, and I. Yamada	
Introduction	363
Measurement of magnetic flux surfaces	364
Diagnostics for secondary currents	365
Profile measurement	365
Diagnostics for electric field	367
Diagnostics under high density operation	368
Diagnostics under long pulse operation	368
Summary	369
<b>66. DIAGNOSTIC SYSTEM FOR THE W7-X STELLARATOR</b>	371
H.J. Hartfuss and the W7-X Diagnostics Team	

Introduction	371
Fluctuations	371
Plasma edge	372
Microwaves	372
Spectroscopy	372
Thomson scattering	373
Soft x-ray and electromagnetic diagnostics	373
Heavy ion beam probe and fast particle detectors	374
Neutron diagnostics	374
<b>67. DIAGNOSIS OF ST PLASMAS IN NSTX: CHALLENGES AND OPPORTUNITIES</b>	<b>375</b>
D. Johnson, P. Efthimion, J. Foley, B. Jones, E. Mazzucato, H. Park, G. Taylor, F. Levinton, and N. Luhmann	
Introduction	375
Present diagnostics	376
Electron Bernstein wave radiometry	376
Motional Stark effect measurement of $q(R)$ and $E_r$	377
Microwave scattering studies of high- $k$ turbulence	378
<b>68. DIAGNOSTIC DEVELOPMENTS FOR MAST SPHERICAL TOKAMAK</b>	<b>379</b>
A.W. Morris and MAST Team	
Introduction	379
Core and profile measurements	379
Plasma density and pellet measurements	380
Plasma boundary and halo diagnostics	381
Fast particle and current profile measurements	381
Summary	381
<b>69. ADVANCES IN THERMAL IMAGING</b>	<b>383</b>
R. Reichle for the TORE SUPRA Infra-red-team	
Introduction	383
Physical and technical background	383
Imaging endoscopes	385
Fibre periscopes	387
Data acquisition	389
Discussion, conclusions, outlook	389
<b>70. FAST MEASUREMENTS OF LIMITER SURFACE TEMPERATURE AND HEAT FLUX VARIATIONS ON THE T-11M TOKAMAK BY IR RADIOMETER</b>	<b>391</b>
V.B. Lazarev, A.G. Alekseyev, A.M. Belov, and S.V. Mirnov	
Introduction	391
Surface temperature measurement by IR irradiation	391
Absolute calibration of IR radiometer	392
Heat power variations on the limiter	392
Conclusions	394
<b>71. PERISCOPE SYSTEMS FOR INFRARED IMAGING ON KOREA SUPERCONDUCTING TOKAMAK ADVANCED RESEARCH (KSTAR)</b>	<b>395</b>
S.J. Yoo and M. Kwon	
Introduction	395
Periscope design	395
Conclusion	398
<b>72. DIAGNOSTICS FOR THE KSTAR: KOREA SUPER-CONDUCTING TOKAMAK ADVANCED RESEARCH</b>	<b>399</b>
M. Kwon, J.G. Bak, S.H. Jeong, Y.S. Jung, B.C. Kim, H.G. Lee, S.G. Lee, H.K. Na, H.L. Yang,	

S.J. Yoo, and KSTAR Team		
	Introduction	399
	Technical challenges	400
	Status of the KSTAR diagnostics systems	401
<b>73.</b>	<b>HELIUM PARTIAL MEASUREMENTS USING A PENNING GAUGE: A NEW APPROACH</b>	<b>403</b>
	P.D. Morgan and contributors to the EFDA-JET Work Programme	
	Introduction	403
	Standard method	403
	New method	405
	Results	405
	Conclusions	406
<b>74.</b>	<b>INTERIOR MAGNETIC FIELD FLUCTUATION AND PROFILE MEASUREMENTS ON MST</b>	<b>407</b>
	D.L. Brower, W.X. Ding, and S.D. Terry	
	Introduction	407
	Polarimetry-interferometry system	408
	Conclusion	409
<b>75.</b>	<b>VACUUM DIODE HIGH VOLTAGE MEASUREMENT BY MEANS OF PHOTONUCLEAR REACTIONS</b>	<b>411</b>
	S. Dan'ko, G. Dolgachev, Yu. Kalinin, and D. Maslennikov	
	Introduction	411
	POS Voltage measurements using photonuclear reactions	412
	Conclusions	414
<b>76.</b>	<b>INDUCTIVE VOLTAGE PROBE IN LINER IMPLOSION EXPERIMENTS ON INSTALLATION ANGARA-5-1</b>	<b>415</b>
	V.V. Alexandrov, E.V. Grabovsky, and G.M. Oleinik	
	Introduction	415
	Inductive voltage probe design	415
	Experimental results	416
	Conclusion	417
<b>77.</b>	<b>MAGNETIC FIELD MEASUREMENTS INSIDE AND OUTSIDE OF IMPLoding ARRAYS ON ANGARA-5-1</b>	<b>419</b>
	I. Frolov, E. Grabovsky, K. Mitrofanov, G. Oleinik, V. Smirnov, and G. Zukakischvili	
	Introduction	419
	Arrangement of experiment and probes constructions	419
	Experimental results	422
	Conclusion	422
<b>78.</b>	<b>MEASUREMENTS OF NEUTRAL DENSITY IN THE ALCATOR C-MOD TOKAMAK</b>	<b>423</b>
	R.L. Boivin, J.W. Hughes, B. LaBombard, D. Mossessian, and J.L. Terry	
	Introduction	423
	Experimental set-up	434
	Experimental results	425
<b>INDEX</b>		<b>427</b>

Bạn đang có trong tay thông tin cơ bản của một trong số những tài liệu có hàm lượng chất xám cao, với những thông tin vô cùng hữu ích cho quá trình học tập và nghiên cứu của bản thân bạn !

Bạn đã và đang trải qua những ưu tư, trăn trở của bản thân mình trước biển kiến thức mênh mông vô hạn và đang tìm hướng đi cho riêng mình bằng việc biến kiến thức thành tài sản tri thức của riêng bạn !

*Hãy để Thư viện trường Đại học Sư phạm Kỹ thuật Tp. HCM chia sẻ những khó khăn và trăn trở đó cùng bạn!*

*Hãy đến với Thư viện trường Đại học Sư phạm Kỹ thuật Tp. HCM để cùng nhau, chúng ta xây dựng vương quốc khoa học và trí tuệ của chính mình !*

*Cùng với bạn, Thư viện ĐH Sư phạm Kỹ thuật Tp. HCM mong ước góp phần duy trì và phát triển văn hóa đọc !*



**Hãy đến với chúng tôi - Thư viện trường Đại học Sư phạm Kỹ thuật Tp. HCM** để cảm nhận, trải nghiệm và biến ước mơ khoa học của bạn thành hiện thực !

Hân hạnh được đón tiếp và phục vụ bạn tại  
**Số 1 – 3, Võ Văn Ngân, Phường Linh Chiểu, Quận Thủ Đức, Tp. HCM**  
ĐT: (08) 3896 9920 – Email: [thuvienspkt@hcmute.edu.vn](mailto:thuvienspkt@hcmute.edu.vn)  
<http://www.thuvienspkt.edu.vn> – <http://thuvien.hcmute.edu.vn>



***Thông tin tài trợ!***



A series of horizontal dotted lines spanning the width of the page, intended for writing. There are 18 lines in total, providing a structured space for text.



**B**ạn đang có trong tay thông tin cơ bản của một trong số những tài liệu có hàm lượng chất xám cao, với những thông tin vô cùng hữu ích cho quá trình học tập và nghiên cứu của bản thân bạn !

Bạn đã và đang trải qua những ưu tư, trăn trở của bản thân mình trước biển kiến thức mênh mông vô hạn và đang tìm hướng đi cho riêng mình bằng việc biến kiến thức thành tài sản tri thức của riêng bạn !

*Hãy để Thư viện trường Đại học Sư phạm Kỹ thuật Tp. HCM chia sẻ những khó khăn và trăn trở đó cùng bạn!*

*Hãy đến với Thư viện trường Đại học Sư phạm Kỹ thuật Tp. HCM để cùng nhau, chúng ta xây dựng vương quốc khoa học và trí tuệ của chính mình !*

*Cùng với bạn, Thư viện ĐH Sư phạm Kỹ thuật Tp. HCM mong ước góp phần duy trì và phát triển văn hóa đọc !*



**Hãy đến với chúng tôi - Thư viện trường Đại học Sư phạm Kỹ thuật Tp. HCM** để cảm nhận, trải nghiệm và biến ước mơ khoa học của bạn thành hiện thực !

Hân hạnh được đón tiếp và phục vụ bạn tại  
**Số 1 – 3, Võ Văn Ngân, Phường Linh Chiểu, Quận Thủ Đức, Tp. HCM**  
ĐT: (08) 3896 9920 – Email: [thuvienspkt@hcmute.edu.vn](mailto:thuvienspkt@hcmute.edu.vn)  
<http://www.thuvienspkt.edu.vn> – <http://thuvien.hcmute.edu.vn>

***Thông tin tài trợ!***



A series of horizontal dotted lines for writing, arranged in a central column. There are 18 lines in total, providing space for a message or acknowledgment.

