



Livio® Radio

Featuring **PANDORA®**
internet radio

User Guide

LV001
LV001-B

Version 5.0 Software v257-a-865-a-122

CONTENTS

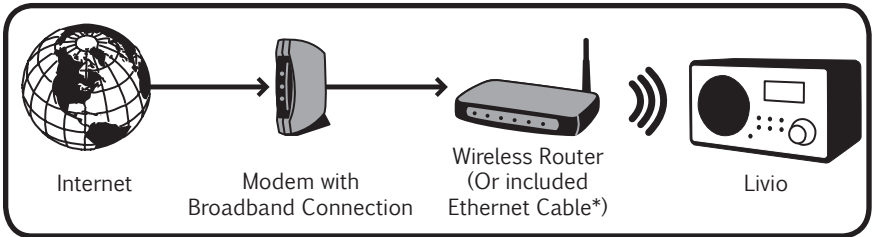
About Livio Radio	2
Connect Livio to the Internet	2
Wi-Fi and Internet connection tips	4
Advanced Settings	6
About Pandora	8
Connecting to Pandora	8
World Internet Stations	9
Livio / Remote Controls	10
Favorite Stations	12
Alarm Clock and Sleep Timer	12
Audio Connections	13
Menu Map	15
Specifications	16
Notes	17
Safety Instructions & Warnings	19
Warranty	21

ABOUT LIVIO RADIO

Based in Ferndale, Mich., Livio Radio aims to make Internet audio programming accessible to more people, in more places. Dedicated to designing products that set up easily and work fast without complicated menus, Livio offers users access to thousands of free programming options available online – music, sports, news and talk from anywhere in the world – through an array of specialty products. Visit www.livioradio.com for more information.

CONNECT LIVIO TO THE INTERNET

- 1. First, plug in your Livio power adapter and connect to a power source.**



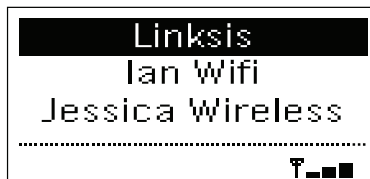
- 2. Wired Internet Connection (LV001 only)**

If you are using a wired connection, connect the Ethernet cable into the back of the Livio and the other end into your Ethernet hub or router.

Proceed to page 8 for the next step.

- 3. Wireless Internet Connection**

Choose your Wi-Fi Internet connection from the list that appears.



* LV001only. LV001-B does not have an Ethernet port. Ethernet cable not included for LV001-B.

If your Wi-Fi Internet connection requires a password, Livio will ask you to **Enter WPA Key** or **Enter WEP Key** on Livio's display. Wi-Fi passwords or Network Keys are case-sensitive. Enter the password character by character turning the knob (or using the up/down arrows on the remote) to go from character to character and pushing the knob in to select the desired character once such character appears in the center of the screen. When finished spelling the password, use the knob until the word **[END]** is selected. Push the knob in one last time to finish entering the password.

NOTE THE PASSWORD IS CASE SENSITIVE

The password can differ in meaning based on differing use of uppercase and lowercase letters.

Press **BACK** to delete letters.

Note *Livio will store your wireless password, but please write it down here in case you need it again.*

*Your Livio will automatically look for new software updates, which provide improvements. When you receive a message on the screen for a software update we recommend selecting **Yes** and automatically loading the update.*

See Audio Connections for information on how to use the Livio Radio with your home stereo.

Check out our online FAQ and help videos at **www.LivioRadio.com/help**

WIRELESS NETWORK (WI-FI) AND INTERNET CONNECTION TIPS

For best setup results, start with the Livio in the same room as the router. After the initial setup feel free to test the Livio's reception around the house.

The Livio will indicate it has successfully connected to the Internet when the clock automatically updates to the correct time of day.

If the Livio is unable to connect to the Internet wirelessly, but is able to connect using an Ethernet cable, there is likely a conflict with the router's wireless configuration.

The best results for a wireless network setup may require changing the broadcast or encryption settings. The optimum configuration may vary from router to router, and will require logging in to the router setup page. To access the router setup page please check the documentation that came with your router, or the manufacture's Web site.

We recommend:

WPA2 encryption. WEP and WPA encryption is supported but not recommended. AES is preferred to TKIP.

Use the newest router firmware/software for the router on the network.

Broadcast in the G band exclusively (disabling B and/or the N bands).

Test other 2.4 GHz channels (1-11) to avoid interference.

Temporarily disable your security settings on the wireless network.

Test the radio in multiple locations to find the best connection.

When switching network settings, or changing networks, it is oftentimes helpful to reset the Livio to its default settings. To reset the Livio go to the Settings menu, and then select **Factory Reset**. After you have reset your Livio, unplug the power adapter, wait 30 seconds, and then replace the adapter. (A Pandora reset will only change Pandora settings and will be unaffected by a factory reset).

If the Livio demonstrates limited range, try checking the Wi-Fi signal strength. First see if there are bars located in the lower right-hand corner of the LCD screen. If there are no bars present, go to the **Settings** menu and select **Wi-Fi Strength**.

We recommend having a minimum of 50 percent reception or two bars present. To improve performance check possible sources of interference (electronics, thick walls, etc.) or rearrange the location of either the router or radio. A wireless repeater or signal booster can also drastically improve reception.

Try moving other 2.4 GHz devices away from the radio and router for improved signal strength, such as cordless phones, Bluetooth devices, and microwaves.

If Livio stops playing music, or loses its connection to the network, remove the power cord from the back of Livio. Plug the power in once more after 20 seconds have passed.

If all else fails, check out the "Frequently Asked Questions" on line at www.LivioRadio.com/FAQ

ADVANCED SETTINGS

If you are having trouble with the automatic set up, this section has all of the questions you will need to ask the person or service that set up your wireless connection. They may require your MAC address, which is found on your radio. Instructions to find your MAC address are on the following pages.

PLEASE READ SAFETY INSTRUCTIONS AND ALL WARNINGS BEFORE USING YOUR LIVIO RADIO.

If security is enabled, your password is the same Wi-Fi password you use on a laptop or desktop computer to connect to the Internet.

Some Wi-Fi Internet networks hide their name for security reasons. If you cannot see your Wi-Fi network in the list, you can manually enter in the Wi-Fi information by selecting **Manual Config** in the SSID Menu.

If you are having trouble with the wireless connection, we recommend using the included Ethernet cable (*Not available on LV001-B*) and connecting directly to your Internet service to help determine if the problem is with Livio or the wireless connection. **After plugging in your ethernet connection, disconnect and reconnect the power connector on your radio to reboot.**

If your Livio works when using the Ethernet cable (*LV001 only*), it probably means a setting needs to be changed in your wireless configuration.

If Livio still does not connect and you received help setting up your wireless Internet connection, you can ask the person who set up your wireless Internet connection to follow the Advanced Settings guidelines in this manual.

To Find Livio's MAC address:

1. Press "BACK" to go to the Main Menu
2. Select "Settings"
3. Select "Network Config"
4. Select "View Config"
5. Scroll to "Wireless MAC Address"

Write down your Wireless MAC Address from Livio

— — : — — : — — : — — : — — : — —

MAC addresses use only numbers 0-9 and only letters A, B, C, D, E, and F. Write down wireless MAC address, not the wired Ethernet MAC address.

IF YOU ARE HAVING TROUBLE WITH THE AUTOMATIC SETUP, YOU MAY NEED THE FOLLOWING INFORMATION ABOUT YOUR HOME WIRELESS INTERNET CONNECTION.

Auto DHCP? YES NO

If NO what IP address does the Livio need:

Network Mask (or Subnet) e.g. 255.255.255.0

Router Gateway Address e.g. 192.168.1.1

DNS Server 1 Address e.g. 192.168.1.1

Do you need a DNS#2 address? YES NO

If YES enter DNS#2 Address:

SSID (aka Network Name):

Note: SSID is CASE SENSITIVE, and must use correct combination of upper or lower case letters.

Network Password

Note Firewall Information: Check that the following ports are open: UDP and TCP ports 80 and 123; DNS port 53.

ABOUT PANDORA

Pandora is your personal DJ.

Enter the name of an artist or song and start listening.

Discover new music you'll love and rediscover old favorites.

Give songs a **Thumbs-Up** or **Thumbs-Down** and Pandora will instantly change the music selection to better match your tastes.

Enjoy all styles of music: Rock, Pop, Urban, Country, Jazz, Classical, Latin and more.

Listen to your stations on your Livio or on the Web at Pandora.com

CONNECTING TO PANDORA

The Livio Radio has been designed to help you to listen to your Pandora® Radio stations. To create a new Pandora account or log into your existing Pandora account with the Livio Radio, go to **www.livioradio.com/pandora**

While listening to music on your Livio, it is normal on certain stations (other than Pandora) to have up to a five-second delay between songs. This is due to the radio station, not Livio. We are working with stations to improve this in future software updates.

Once you have the **Serial Number** and the **Registration ID/Key** you will be able to sync your radio to a Pandora account. This requires a connection to the Internet either wired or wireless.

*The **Registration ID** can be found in the **Settings** menu under **Register**.*

*The **Registration ID/Key** may update several times a day and every time the radio is powered on. It is important to register the Livio at www.livioradio.com/pandora soon after receiving the code.*

The **Serial Number** can be found in the **Settings** menu under **Version**.

The **Serial Number** is different from the **Software Version Number** found in the same menu. Scroll over to make sure you find the correct **Serial Number**. The number should not start with the letter **V** but rather a number.

*A "Pandora Reset" will remove any account that has been synced to your radio. If a "Pandora Reset" has been performed then repeat the **Connecting to Pandora** instructions.*

WORLD INTERNET STATIONS

Search for Stations by Location

Select **Location World** from the **Internet Radio** menu. First choose a continent, then a country, and if applicable a state or region. Once a location is chosen the options to search by genre or to show all stations will be available.

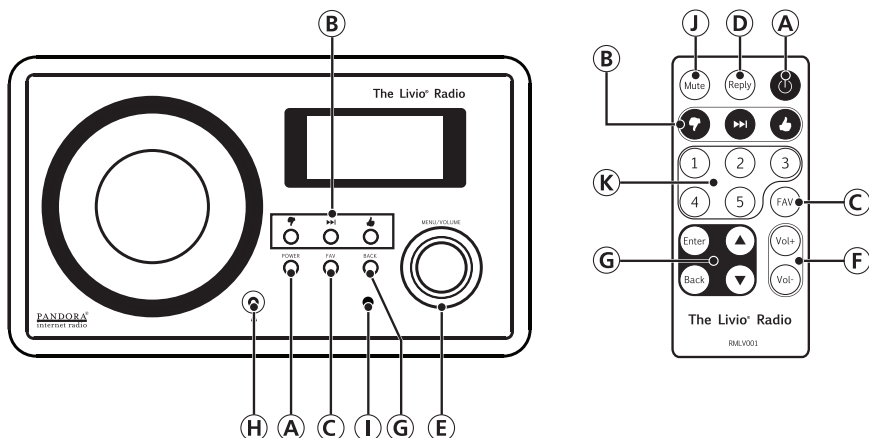
Searching by Genre

Select **Genre World** from the **Internet Radio** menu and select a music style. Once a genre is selected, the options show all available stations and search by location will appear. See **Search by Location** if you choose to further the search.

Searching by Keyword

Select **Search World**. Enter the name of a station or the keyword. Press **[END]** when finished. A list of stations that the keyword applies to will appear. A space may be added by selecting the blank space adjacent to the end box.

LIVIO / REMOTE CONTROLS




A. Power ON/OFF

B. Pandora controls

Provide feedback or skip Pandora music.

Use the **Thumbs Up** button  to tell Pandora that you like the song playing.

Use the **Thumbs Down** button  to tell Pandora that you do NOT like the song playing.

Use the **Next Track** button  to skip through the current song, and start playing a new song.

You can only use the Pandora feedback when listening to Pandora Internet radio. They will not work with other Internet radio stations. Pandora reserves the right to modify functionality of the Pandora Internet Radio service.

C. FAV

When you hear an Internet radio station you would like to save as a favorite, press and hold **FAV**. To show a list of your saved Favorite stations, press **FAV** once.

To delete a station from the Favorite **FAV** list, highlight the station in the **FAV** list and press and hold the volume knob for 2 seconds.

Pandora stations are stored in the Pandora menu, not on the FAV menu.

D. Reply

This button is used to send feedback to Pandora and to other Internet radio stations. When listening to Internet radio stations, use to delete Favorites or find similar stations. Use it while listening to Pandora to the show song details, bookmark a song, bookmark an artist, provide feedback, or to receive more information about why Pandora is playing a particular song.

E. Menu/Volume Knob

Press the knob to bring up the menu screen. Scroll to select option and press the knob to enter. Controls volume, (spin left to decrease sound, and right to increase sound).

When creating a Pandora station scroll to [END] and select in order to input the band or artist. The Livio will give you options from that point. To simplify, the whole name does not have to be entered.

F. Vol +/ Vol-

Volume adjustment. Press **Vol+** to increase volume; press **Vol-** to decrease volume.

G. Up/Down/Back/Enter

Navigate the menus on the Livio screen.

Press to bring up the menu options on the Livio screen

H. Headphone Plug

Accepts 1/8" mini-jack headphones. Headphones not included.

I. Remote Control Sensor

For best performance, this area should be left unobstructed, so that the remote control can communicate with the base unit.

J. Mute

Turns volume off, but music source continues to play.

K. Presets (1-5)

Press and hold to store what you are listening to as a favorite station.

Presets can include both Internet radio stations and your own custom Pandora stations.

FAVORITE STATIONS

Enjoy the music you love

To listen to music, select **Internet Radio** and then select either **Pandora** or search for an Internet radio station.

Favorite stations (FAV)

Refer to the Livio Controls section.

ALARM CLOCK AND SLEEP TIMER

The clock sets automatically when an Internet connection is made.

Set the clock manually

Press the **Menu** knob.

Turn knob to highlight **Settings**, and push knob to select.

Turn knob to highlight **Clock**, and push knob to select.

Highlight **Set Time** and select. Highlight **Time Zone** and select. This will bring you to a clock display. Highlight the hour, and turn until the correct hour is displayed. Repeat for minutes.

Set the alarm clock

The Livio Radio has 5 alarms. To find the alarm clock menu repeat the steps above, selecting **Set Alarms**.

Each alarm (1-5) may be set for a desired time. Select frequency (**Once, Every Day, Weekly, Weekdays, or Weekend**.) Then select alarm sound (**Buzzer, AUX IN, or current station**). The alarm will sound, once the criteria set forth has been met.

When the alarm triggers, **Turn on Radio? YES/NO** will appear on-screen. Use the up/down arrows on the remote or the menu/volume knob on the front of the radio to select **Yes** to keep the radio on after the alarm has sounded. Select **No** or press the power button to turn your radio off.

Note: If you lose your Internet signal, a buzzer sound will play at the given time if the radio cannot connect to the set station.

Snooze

If you would like to silence the alarm momentarily, press the **BACK** button. The alarm will turn off and re-trigger after 5 minutes.

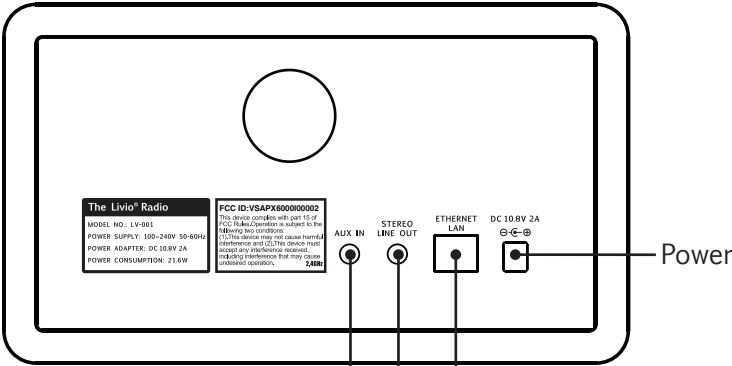
To snooze for an additional 5 minutes, press **BACK** again, or to exit the snooze function, select **YES** or **NO** as described above.

Set the sleep timer

Sleep Timer is found in the **Settings** menu. Set the timer to turn off the radio after a set period of time so that you can fall asleep listening to the Livio Radio.

AUDIO CONNECTIONS

AUX In / RCA Out (fixed) / Aux Out (fixed) / Headphone (variable)



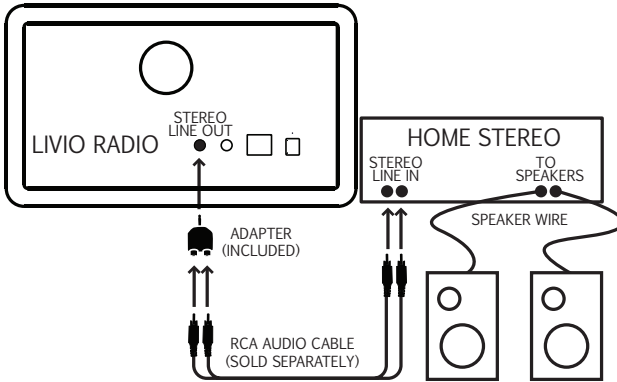
For connecting external audio devices, including MP3 players

For connecting to wired Internet (LV001 only)

For connecting to an external powered speaker system

Connect Livio to your home speaker system (optional)

In the box Livio came in, you will find an RCA (red/white) adapter. You can plug Livio into any auxiliary input jack on a boombox, home stereo, or television. These inputs are usually marked with an "IN" or "INPUT" and may also be colored red and white.

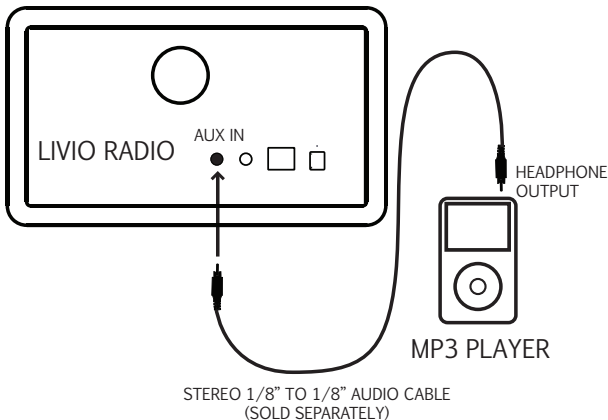


We recommend setting the volume of your home speaker system to under 20 percent before connecting Livio. The output is a fixed volume and can only be controlled by your speaker system.

Listen to your other music devices

Connect your MP3 player, CD Player, or other music device to the auxiliary input jack (**AUX IN**).

Then select **Auxiliary Input** on the Livio main menu screen.



MENU MAP

Internet Radio

- Pandora
 - Stations
 - Create Station
 - Pandora Reset
- Location World
 - Continent
 - Country (List)
- Genre World
 - Genre List
- Search World
 - Search Entry Field

Auxiliary Input:

Plays music from the audio input on the back of the Livio

Setting

- Network Config
- Version
- Upgrade Firmware
- Language
- Factory Reset
- Register
- Clock
- Backlight
- Contrast
- UPnP: Not Used on Livio
- Wi-Fi Strength

SPECIFICATIONS

General Specifications

Radio Dimensions	9.25 X 5.8 X 5.4 in 235 X 137 X 148mm
Radio Weight	4.2 lbs (1917g)
Gift Box Weight	5.5 lbs (2480g)
Remote Size	3.4 X 1.6 X 0.3 in (86 X 40 X 6.5mm)
Remote Weight	1.4 oz (40g)
Remote Battery	Button Cell CR2025

Audio Specifications



Total Power Consumption	10 Watts
Amplifier Class	Bridge Tied Load (BTL)
Amplifier Output Power RMS	4.5 Watts
Amplifier Output Peak	7 Watts
Speaker Type	3" 4 ohm Magnetic Voice Coil

In The Box

- The Livio Radio with built in Wi-Fi antenna
- Remote Control
- Power Adapter
- 6-foot Ethernet Internet Cable (*LV001 only*)
- User Helper

SAFETY INSTRUCTIONS & WARNINGS

TO PREVENT FIRE OR SHOCK HAZARD, DO NOT USE THIS PLUG WITH AN EXTENSION CORD, RECEPTACLE OR OTHER OUTLET UNLESS THE BLADES CAN BE FULLY INSERTED TO PREVENT BLADE EXPOSURE. TO PREVENT FIRE OR SHOCK HAZARD, DO NOT EXPOSE THIS APPLIANCE TO RAIN OR MOISTURE.

 <p>The lightning flash with arrowhead symbol, within an equilateral triangle is intended to alert the user to the presence of insulated 'dangerous voltage' within the product's enclosure that may be of sufficient magnitude to constitute a risk of electric shock to persons.</p>	<div style="border: 1px solid black; padding: 5px; text-align: center;"> <p>CAUTION</p> <p>RISK OF ELECTRIC SHOCK</p> <p>DO NOT OPEN</p> </div> <p>WARNING: To reduce the risk of electric shock, do not remove cover (or back). No user serviceable parts are inside. Refer servicing to qualified personnel.</p>	 <p>The exclamation point within an equilateral triangle is intended to alert the user to the presence of important operating and maintenance (servicing) instructions in the literature accompanying the appliance.</p>
---	--	---

Important Safety Instructions

1. Read these instructions.
2. Keep these instructions.
3. Read all warnings.
4. Follow all instructions.
5. Do not use this apparatus near water.
6. Clean only with dry cloth.
7. Do not block any ventilation openings. Install in accordance with the manufacturer's instructions.
8. Do not install near any heat sources such as radiators, heat registers, stoves, or other apparatus (including amplifiers) that produce heat.
9. Protect the power cord from being walked on or pinched particularly at plugs, convenience receptacles, and the point where they exit the apparatus.
10. Only use attachments/accessories specified by manufacturer.
11. Unplug this apparatus during lightning storms or when unused for long periods of time.

12. Refer all servicing to qualified service personnel. Servicing is required when the apparatus has been damaged in any way, such as power-supply cord or plug is damaged, liquid has been spilled or objects have fallen into the apparatus, the apparatus has been exposed to rain or moisture, does not operate normally, or has been dropped.
13. This appliance should not be exposed to dripping or splashing water and no object filled with liquids such as vases shall be placed near the apparatus.
14. Do not overload wall outlet. Use only power source indicated.
15. Use replacement parts as specified by the manufacturer.
16. Please do not use as a flotation device.☺
17. No open flame sources, such as lighted candles, should be placed on or near the device.
18. Place in a stable location so it will not fall, which could cause product damage or bodily harm.
19. Refer all servicing to qualified service personnel. Servicing is required when the device has been damaged in any way, such as power-supply cord or plug is damaged, liquid has been spilled or objects have fallen into the device, the device has been exposed to rain or moisture, does not operate normally, or has been dropped.

This device complies with part 15 of the FCC rules. Operation is subject to the following two conditions:

1. This device may not cause harmful interference, and
2. This device must accept any interference received, including interference that may cause undesired operation.

This Class B digital apparatus complies with Canadian ICES-003.
Cet appareil numérique de la classe B est conforme à la NMB-003 du Canada.

For Warranty or Service

Livio Radio, LLC
3136 Hilton Rd
Ferndale, MI 48220
(248) 591-0333
help@livioradio.com
www.livioradio.com/help

WARRANTY

Livio Radio (“Livio”) Limited Consumer Warranty United States of America

Livio warrants all Radio Products sold by Livio (each “Product”) to be free of defects in material and workmanship, subject to the following conditions:

The duration of Livio’s warranty with respect to each Product is limited to one (1) year from the date of sale to the original consumer purchaser. No other express warranties are made with respect to any Product.

All implied warranties, including warranties of merchantability and fitness for a particular product are limited to the warranty period set forth above. This warranty is not transferable and applies only to the original consumer purchaser of the Product. Livio will, as its sole obligation under this warranty, replace or repair, at its option, any Product that does not conform to this warranty.

Products may be repaired or replaced with new or refurbished items. This limited warranty does not cover defects in appearance, cosmetic or decorative items, including any non-operative parts. Under no circumstances will Livio be liable for any incidental or consequential damages under this warranty or any implied warranties. These remedies are the customer’s exclusive remedies for breach of warranty. This limited warranty only extends to customers who purchase the Products in the United States.

Livio will not be responsible for damage resulting from any of the following:

1. Deviation from Livio’s operating instructions as printed in Livio’s catalog or on any packaging, labels, or other literature provided with a Product
2. Installation of a Product in a manner which is inconsistent with Livio’s written instructions
3. Alteration or modification of a Product
4. Misuse
5. Neglect
6. Abuse
7. Accident
8. Normal wear and tear
9. Commercial use
10. Improper storage

11. Environmental conditions, including excessive temperature or humidity
12. Service by any entity other than a Livio authorized repair facility
13. Use of the Product in conjunction with any non-Livio branded accessory
14. Other improper application, installation, or operation of this Product
15. Defects or malfunctions of which Livio is not advised within ten (10) days of the expiration of the limited warranty period

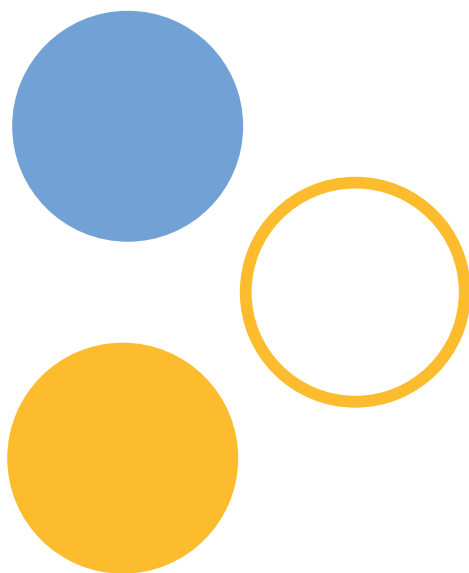
How You Can Get Service

To obtain warranty service during the first thirty (30) days after the date of purchase, you must return the defective Product with the original receipt to the original place of purchase. To obtain warranty service during the first thirty (30) days for Products purchased specifically from www.LivioRadio.com, you must contact the E-Store directly at the number provided on your invoice. For all Products for the remainder of the limited warranty period, you must contact Livio by phone at the customer service number listed at www.LivioRadio.com. If further clarification or additional information is required from Livio, you may call Livio at our customer service number listed at www.LivioRadio.com. If warranty service is needed at any time during the warranty period, the purchaser will be required to furnish a sales receipt/proof of purchase indicating the date of purchase, amount paid, and place of purchase. Customers who fail to provide such proof of purchase will have the Product returned to them or will be charged for the repair/replacement of any Product. The customer is responsible for shipping the Product to an authorized Livio Warranty Facility.

How State Law Relates to the Warranty

Some states do not allow limitations on the duration of implied warranties, or the exclusion or the limitation of incidental or consequential damages. Thus, the above limitations or exclusions may not apply to you. This warranty gives you specific legal rights. You may also have other rights that may vary from state to state.

NO PERSON IS AUTHORIZED BY LIVIO TO MODIFY OR ADD TO THIS LIMITED WARRANTY.



Need help?
www.LivioRadio.com/help